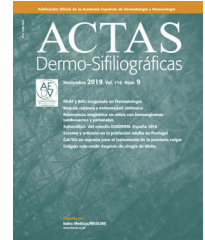




ACADEMIA ESPAÑOLA  
DE DERMATOLOGÍA  
Y VENEREOLOGÍA

# ACTAS Dermo-Sifiliográficas

Full English text available at  
[www.actasdermo.org](http://www.actasdermo.org)



## CONSENSUS DOCUMENT

# [Translated article] Reflectance Confocal Microscopy Terminology in Spanish: A Delphi Consensus Study



A. Abarzua-Araya<sup>a,b,c,d</sup>, J. Bañuls<sup>b</sup>, H. Cabo<sup>c</sup>, C. Carrera<sup>d,e,f,g,h,i,j,k</sup>, R. Gamo<sup>e</sup>, S. González<sup>f</sup>, N. Jaimes<sup>g</sup>, C. Navarrete-Dechent<sup>a</sup>, J. Pérez Anker<sup>d</sup>, R. Roldán-Marín<sup>h</sup>, S. Segura<sup>i</sup>, O. Yélamos<sup>j</sup>, S. Puig<sup>d,e,f,g,h,i,j,k,\*</sup>, J. Malvehy<sup>d,e,f,g,h,i,j,k</sup>

<sup>a</sup> Melanoma Unit, Dermatology Department, Pontificia Universidad Católica de Chile, Santiago, Chile

<sup>b</sup> Dermatology Department, Hospital General Universitario de Alicante Dr. Balmis, ISABIAL, Alicante, Spain

<sup>c</sup> Universidad de Buenos Aires, Buenos Aires, Argentina

<sup>d</sup> Melanoma Unit, Dermatology Department, Hospital Clínic, Universitat de Barcelona, Institut d'Investigacions Biomèdiques August Pi i Sunyer (IDIBAPS), Barcelona, Spain

<sup>e</sup> Hospital Fundación Alcorcón, Madrid, Spain

<sup>f</sup> Department of Medicine and Medical Specialties, Alcalá de Henares University, Madrid, Spain

<sup>g</sup> Dr Phillip Frost Department of Dermatology & Cutaneous Surgery, and Sylvester Comprehensive Cancer Center, University of Miami Miller School of Medicine, Miami, Florida, United States

<sup>h</sup> Clínica de Onco-dermatología, División de Investigación, Facultad de Medicina, Universidad Nacional Autónoma de México, Ciudad de México, México

<sup>i</sup> Dermatology Department, Hospital del Mar, Institut Hospital del Mar d'Investigacions Mèdiques (IMIM), Barcelona, Universitat de Vic-Universitat central de Catalunya (UVIC), Spain

<sup>j</sup> Dermatology Department, Hospital de Santa Creu i Sant Pau de Barcelona, IIB SANT PAU, Universitat Autònoma de Barcelona, Barcelona, Spain

<sup>k</sup> Centro de Investigación Biomédica en Red de Enfermedades Raras, Instituto de Salud Carlos III, Barcelona, Spain

Received 4 September 2023; accepted 9 October 2023

Available online 19 January 2024

### KEYWORDS

Reflectance confocal microscopy;  
Consensus;  
Terminology;  
Nomenclature;  
Melanoma;  
Basal cell carcinoma

**Abstract** The terminology used to describe reflectance confocal microscopy (RCM) findings in both melanocytic and nonmelanocytic lesions has been standardized in English. We convened a panel of Spanish-speaking RCM experts and used the Delphi method to seek consensus on which Spanish terms best describe RCM findings in this setting. The experts agreed on 52 terms: 28 for melanocytic lesions and 24 for nonmelanocytic lesions. The resulting terminology will facilitate homogenization, leading to a better understanding of structures, more standardized descriptions in clinical registries, and easier interpretation of clinical reports exchanged between dermatologists.

© 2024 Published by Elsevier España, S.L.U. on behalf of AEDV. This is an open access article under the CC BY-NC-ND license (<http://creativecommons.org/licenses/by-nc-nd/4.0/>).

DOI of original article: <https://doi.org/10.1016/j.ad.2023.10.014>

\* Corresponding author.

E-mail address: [spuig@clinic.cat](mailto:spuig@clinic.cat) (S. Puig).

<https://doi.org/10.1016/j.ad.2024.01.018>

0001-7310/© 2024 Published by Elsevier España, S.L.U. on behalf of AEDV. This is an open access article under the CC BY-NC-ND license (<http://creativecommons.org/licenses/by-nc-nd/4.0/>).

**PALABRAS CLAVE**

Microscopia confocal de reflectancia; Consenso; Terminología; Nomenclatura; Melanoma; Carcinoma basocelular

**Consenso de terminología en microscopia confocal de reflectancia en español mediante método Delphi**

**Resumen** La terminología usada para describir los diferentes hallazgos en la microscopia confocal de reflectancia (MCR), tanto en lesiones melanocíticas, como en no melanocíticas se ha consensado en inglés. En el presente trabajo, se proponen los términos en español que mejor interpretan estos conceptos ya descritos para la MCR, mediante el consenso de expertos de distintas nacionalidades de habla hispana y utilizando el método DELPHI para el acuerdo final. Se obtuvieron 52 términos en total, de los cuales 28 fueron para lesiones melanocíticas y 24 para lesiones no melanocíticas. El uso de la nomenclatura propuesta permitirá una homogeneización y mejor entendimiento de las estructuras; una descripción más estandarizada en los registros clínicos y una mejor interpretación de estos informes por otros dermatólogos.

© 2024 Publicado por Elsevier España, S.L.U. en nombre de AEDV. Este es un artículo Open Access bajo la licencia CC BY-NC-ND (<http://creativecommons.org/licenses/by-nc-nd/4.0/>).

**Introduction**

Reflectance confocal microscopy (RCM) is an in-vivo, non-invasive imaging modality for real-time visualization of the cutaneous-mucosal surface with cellular resolution and quasi-histological precision down to a depth of 200 m to 250  $\mu\text{m}$ .<sup>1–3</sup> The RCM has proven useful in the diagnosis of melanocytic,<sup>4–13</sup> and non-melanocytic lesions<sup>14–35</sup> in multiple publications, meta-analyses, and systematic reviews.<sup>36–40</sup> To date, the terminology used to describe multiple findings on a RCM in normal skin, and melanocytic,<sup>41,42</sup> and non-melanocytic lesions,<sup>43</sup> has been standardized in English. This results in difficulties describing health records, interpreting these reports by other dermatologists, and conducting studies involving RCM in Spanish. As far as we know, there is currently no official consensus among experts regarding RCM terminology.

**Objective**

The aim of this study is to reach consensus on the Spanish nomenclature of the most widely used terminology in melanocytic and non-melanocytic lesions in RCM.

**Methods**

This was a review of the scientific medical literature available conducted on MEDLINE (PubMed) to identify the most widely used English terms regarding RCM in articles, systematic reviews,<sup>42,43</sup> and the one consensus article on terminology in English.<sup>41</sup> The search terms used included reflectance confocal microscopy; RCM; terminology; glossary; melanoma, melanocytic lesions, non-melanocytic lesions; basal cell carcinoma; squamous cell carcinoma; actinic keratosis; seborrheic keratosis; solar lentigo; and lichen planus-like keratosis. The terms for the most widely reported structures in RCM for melanoma, atypical nevus, basal cell carcinoma (BCC), squamous cell carcinoma (SCC), actinic keratosis, seborrheic keratosis, solar lentigo, and lichenoid keratosis were identified. Equivalent terms or structures were simplified, while others were considered synonyms. Lesions were categorized into 2 major groups:

melanocytic and non-melanocytic lesions. The latter were then categorized into 3 different groups: the first group included only BCC; the second one, SCC and actinic keratosis; and the third one, solar lentigo, seborrheic keratosis, and lichenoid keratosis.

A consensus was reached using the e-Delphi methodology, where 14 Spanish-speaking experts on reflectance confocal microscopy from Spain, Chile, Argentina, Colombia, and Mexico validated the agreement. They were invited to participate via e-mail, and those who accepted were provided with a link to access the survey, which was conducted using the Google Forms platform (<https://docs.google.com/forms/u/0/>). In Delphi's 1<sup>st</sup> round, the response options included "strongly agree," "agree," and "disagree." Terms with agreement > 80% for "strongly agree" were considered optimal and did not require any more Delphi rounds. Terms with agreement < 80% for "strongly agree" required a 2<sup>nd</sup> round. Experts who did not fully agree with a selected Spanish term could propose an alternative term for the next round. The 2<sup>nd</sup> round included "agree" and "disagree" as options available. Terms with agreement > 80% for "agree" were considered optimal and did not require any more Delphi rounds. In this round, only for the English expression "nests of basaloid cells," participants had to vote between the Spanish expressions "*nidos basaloides*" or "*nidos hiporrefractiles*," being the winner decided by simple majority. A 3<sup>rd</sup> round was deemed unnecessary.

**Results**

Fourteen out of the 14 experts invited to participate via e-mail responded to Delphi's 1<sup>st</sup> round which included a total of 52 English terms and their proposed Spanish translations. Twenty-eight of these terms were for melanocytic lesions, and 24 for non-melanocytic lesions. The 24 terms for non-melanocytic lesions correspond to 9 terms for basal cell carcinoma, 9 for squamous cell carcinoma and actinic keratosis, and 6 for solar lentigo, seborrheic keratosis, and lichenoid keratosis. In Delphi's 1<sup>st</sup> round, > 80% agreement was reached for the "strongly agree" alternative in 25 out of 28 terms for melanocytic lesions (Table 1), including honeycomb pattern, cobblestone pattern, disorganized epi-

**Table 1** RCM terminology for melanocytic lesions.

English RCM term	Spanish RCM term	% of strong agreement in Delphi's 1 <sup>st</sup> round	% of agreement in Delphi's 2 <sup>nd</sup> round
Honeycomb pattern	Patrón en panal de abejas	100%	–
Cobblestone pattern	Patrón en empedrado	100%	–
Atypical honeycomb pattern	Patrón en panal de abejas atípico	100%	–
Atypical cobblestone pattern	Patrón en empedrado atípico	100%	–
Disarranged epidermis	Epidermis desorganizada	100%	–
Ring pattern	Patrón en anillos	93.3%	–
Meshwork pattern	Patrón en malla	100%	–
Clod pattern	Patrón globular	86.7%	–
Mixed pattern	Patrón mixto	100%	–
Edged papillae	Papilas bien delimitadas	100%	–
Non-edge papillae	Papilas mal delimitadas	100%	–
Junctional thickening	Engrosamiento juntural	86.7%	–
Bridging/short interconnections/ mitochondria-like structures	Estructuras tipo mitocondria	73.3%	100%
Medusa head-like structures	Estructuras tipo cabeza de medusa	100%	–
Pagetoid cells	Células pagetoides	100%	–
Pleomorphic cells	Células pleomórficas	100%	–
Dendritic cells	Células dendríticas	100%	–
Roundish/round cells	Células redondas	93.3%	–
Atypical cells	Células atípicas	100%	–
Sheet-like structures	Estructuras en sábana	93.3%	–
Atypical cells in the dermal papilla	Células atípicas intrapapilares	86.7%	–
Junctional nest	Nidos de la unión	93.3%	–
Dense nest	Nidos densos	100%	–
Discohesive/irregular nest	Nidos discohesivos	80%	92.3%
Cerebriform nest	Nidos cerebriformes	100%	–
Plump cells	Melanófagos	80%	100%
Inflammatory cells	Células inflamatorias	100%	–
Thickened collagen	Fibras colágenas engrosadas	93.3%	–

**Table 2** RCM terminology for basal cell carcinoma.

English RCM term	Spanish RCM term	% of strong agreement in Delphi's 1 <sup>st</sup> round	% of agreement in Delphi's 2 <sup>nd</sup> round
Streaming/polarization	Polarización	86.7%	–
Architectural disorder	Desorden arquitectural	93.3%	–
Palisading	Empalizada	100%	–
Clefting	Hendidura	100%	–
Cord-like structures/basaloid cords	Cordones basaloides	93.3%	–
Tumor island/nest of basaloid cells	Nidos basaloides	60%	61.5% <sup>a</sup>
Dark silhouettes	Siluetas oscuras	100%	–
Linear blood vessels	Vasos sanguíneos horizontalizados	73.3%	84.6%
Rolling leucocytes	Tráfico leucocitario	93.3%	–

<sup>a</sup> Term selected by simple majority.

dermis (Fig. 1A); pagetoid cells, dendritic cells, pleomorphic cells, round cells (Fig. 1B and C), poorly demarcated papillae (Fig. 2A), junctional thickening (Fig. 2B), and atypical cells (Fig. 2C and D); 19 out of 24 terms for non-melanocytic lesions; 7 out of 9 terms for basal cell carcinomas (Table 2) including polarization, clefting, and peripheral palisading (Fig. 3B); 8 out of 9 terms for squamous cell carcinoma and actinic keratosis (Table 3), including architectural disorder, and atypical honeycomb pattern (Fig. 3A); and in 4 out of 6 terms for solar lentigo, seborrheic keratosis, and lichenoid

keratosis, including milium cysts, keratin-filled epidermal invaginations, and bulbous projections (Table 4).

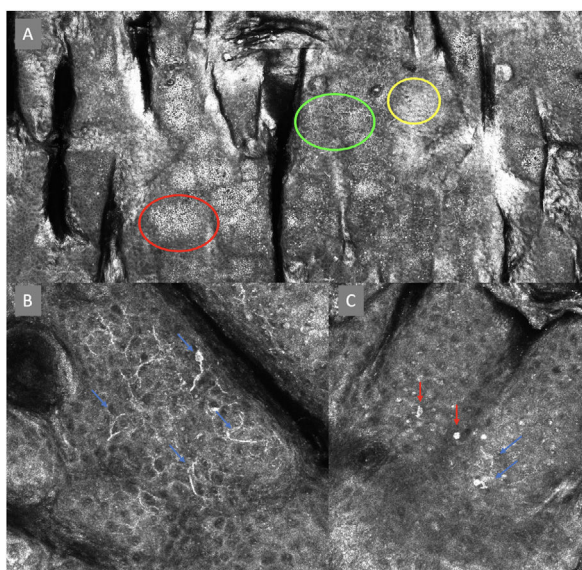
Delphi's 2<sup>nd</sup> round was submitted by e-mail and responded by 13 out of 14 experts. In this 2<sup>nd</sup> round, a total of 8 terms were reassessed (3 and 5 terms for melanocytic and non-melanocytic lesions, respectively), reaching > 80% agreement in 7 of them; 3 terms for melanocytic lesions (Table 1) corresponding to mitochondria-like structures (Fig. 2A), discohesive nests, and melanophages, and 4 for non-melanocytic lesions, which are broken down into 1 for

**Table 3** RCM terminology for squamous cell carcinoma and actinic keratosis.

English RCM term	Spanish RCM term	% of strong agreement in Delphi's 1 <sup>st</sup> round	% of strong in Delphi's 2 <sup>nd</sup> round
Scale	Escama	100%	–
Hyperkeratosis	Hiperqueratosis	100%	–
Parakeratosis	Paraqueratosis	100%	–
Atypical honeycomb pattern	Patrón en panal de abeja atípico	100%	–
Architectural disarray	Desorden arquitectural	100%	–
Keratinocyte pleomorphism	Queratinocitos pleomórficos	100%	–
Dyskeratotic cells	Células disqueratóxicas	100%	–
Elongated dermal papillae	Papilas elongadas	93.3%	–
Buttonhole vessels/dilated looping blood vessels within papillae	Vasos en botón	73.3%	92.3%

**Table 4** RCM terminology for solar lentigo, seborrheic keratosis, and lichenoid keratosis.

English RCM term	Spanish RCM term	% of strong agreement in Delphi's 1 <sup>st</sup> round	% of strong in Delphi's 2 <sup>nd</sup> round
Milia-like cysts	Quistes de millium	93.3%	–
Keratin-filled invaginations	Invaginaciones epidérmicas repletas de queratina	93.3%	–
Round to polycyclic dermal papillae	Unión dermoepidérmica policíclica	73.3%	92.3%
Bulbous projections	Proyecciones bulbosas	100%	–
Plump cells	Melanófagos	60%	100%
Bright stellate spots	Células inflamatorias	93.3%	–



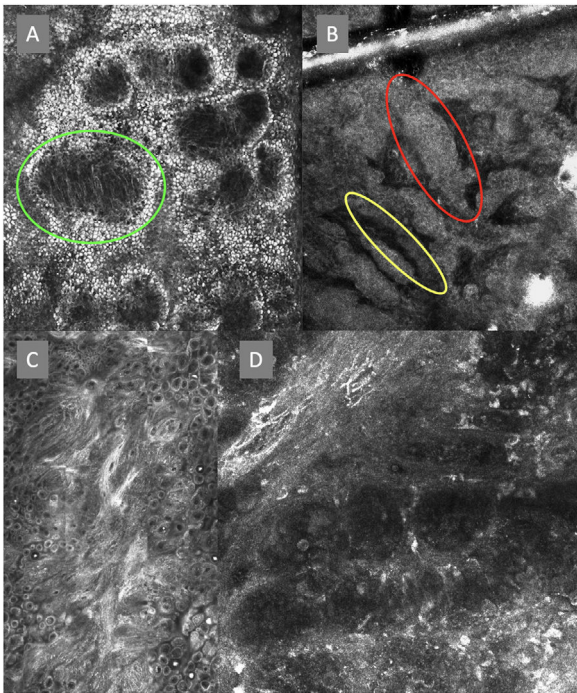
**Figure 1** Confocal microscopy images in high epidermal layers. Top (A). Presence of honeycomb pattern (red circle), cobblestone pattern (yellow circle), and disorganized epidermis with dendritic cells (green circle). Bottom. Detail of pagetoid growth cells. Left (B). Dendritic cells (blue arrow). Right (C). Pleomorphic, round (red arrow), and dendritic cells (blue arrow).

basal cell carcinoma corresponding to horizontally oriented blood vessels (Table 2) (Fig. 3B); 1 for squamous cell carcinoma and actinic keratosis corresponding to button-like

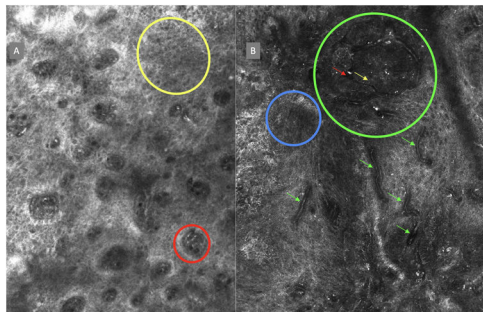
blood vessels (Table 3) (Fig. 3A), and 2 for solar lentigo, seborrheic keratosis, and lichenoid keratosis, corresponding to a polycyclic dermoepidermal junction and melanophages (Table 4). The term “nests of basaloid cells” was selected by simple majority, resulting in the choice of the Spanish term “*nidos basaloides*” with 61.5% agreement (Fig. 3B).

## Discussion

The obvious dominance and prioritization of the English language in scientific publications, atlases, and textbooks lead to using English terminology that is not always translated uniformly or intuitively into Spanish. This results in considerable variation in the use and translation of terms, many of which already have variations in English. Additionally, an increasing number of Spanish-speaking dermatologists are trained in non-invasive diagnostic imaging modalities such as RCM in centers across Europe, or the United States. While RCM is not widely used, its use is spreading globally, with several centers in Spain,<sup>44</sup> and some in Mexico, Colombia, Argentina, and Chile currently using this diagnostic technology. Therefore, it seems imperative to have a common language for the terms in Spanish that are currently described in English for designing future publications, writing medical reports, explaining findings to patients, or simply for Spanish-speaking dermatologists to understand these reports even though they may not use this technology. While some works have already achieved some degree of consensus on in vivo RCM terminology in English,<sup>41</sup> we believe time was ripe to create a consensus glossary in Spanish language among experts. Finally, ACTAS DERMATOSI-



**Figure 2** Confocal microscopy images of the dermoepidermal junction. Top left (A). Presence of rings and cobblestones, with poorly demarcated papillae and dendritic cells protruding into the papilla, setting up a mitochondria-like structure (green circle). Top right (B). Junctional thickening (red) and elongated papillae (yellow). Bottom left (C). Loss of normal architecture of the dermoepidermal junction. Bottom right (D). A higher magnification reveals the presence of poorly demarcated papillae with presence of atypical cells (dendritic and round).



**Figure 3** The image to the left (A) illustrates an epidermal architectural disorder with presence of button-like blood vessels, one of them indicated by a red circle, and an atypical honeycomb pattern (yellow circle), which is a typical image of Bowen's disease. The image to the right (B) illustrates nuclear polarization (blue circle), horizontalized blood vessels (green arrows), basaloid nests (green circle), clefting (red arrow), and peripheral palisade (yellow arrow), which are all typical findings of basal cell carcinoma.

FILOGRÁFICAS includes 2 versions of the same scientific article, one written in English and the other one in Spanish, such as The role of confocal microscopy in the diagnosis of melanocanthoma,<sup>45,46</sup> so it is essential to reach some degree of consensus on Spanish terminology with its corresponding correlation in English. In this work, we propose terms that

best interpret the concepts agreed upon in English for the nomenclature of melanocytic and non-melanocytic lesions described on the RCM through expert consensus across multiple Spanish-speaking nationalities using the DELPHI method for final agreement.

### Limitations

The relatively low number of participants limited to academic centers with access to the technique. Existing English terms were used as the basis, which left little or no room for variations.

### Conclusions

The use of the nomenclature proposed for RCM in Spanish will allow for standardization and better understanding of the structures and their correlation with histopathology regarding melanocytic and non-melanocytic lesions. Eventually, this will provide a more standardized description in health records, better interpretation of these reports by other dermatologists, and proper characterization of the structures at stake for teaching purposes and conducting studies on RCM in Spanish.

### References

1. Rajadhyaksha M, Marghoob A, Rossi A, Halpern AC, Nehal KS. Reflectance confocal microscopy of skin in vivo: From bench to bedside. *Lasers Surg Med.* 2017;49:7–19.
2. Rajadhyaksha M, Grossman M, Esterowitz D, Webb RH, Anderson RR. In vivo confocal scanning laser microscopy of human skin: Melanin provides strong contrast. *J Invest Dermatol.* 1995;104:946–52.
3. Rajadhyaksha M, Gonzalez S, Zavislan JM, Anderson RR, Webb RH. In vivo confocal scanning laser microscopy of human skin II: Advances in instrumentation and comparison with histology. *J Invest Dermatol.* 1999;113:293–303.
4. Segura S, Puig S, Carrera C, Palou J, Malvehy J. Development of a two-step method for the diagnosis of melanoma by reflectance confocal microscopy. *J Am Acad Dermatol.* 2009;61:216–29.
5. Ahlgrimm-Siess V, Hofmann-Wellenhof R, Cao T, Oliviero M, Scope A, Rabinovitz HS. Reflectance confocal microscopy in the daily practice. *Semin Cutan Med Surg.* 2009;28:180–9.
6. Ahlgrimm-Siess V, Massone C, Scope A, Fink-Puches R, Richtig E, Wolf IH, et al. Reflectance confocal microscopy of facial lentigo maligna and lentigo maligna melanoma: a preliminary study. *Br J Dermatol.* 2009;161:1307–16.
7. Pellacani G, Vinceti M, Bassoli S, Braun R, Gonzalez S, Guitera P, et al. Reflectance confocal microscopy and features of melanocytic lesions: an internet-based study of the reproducibility of terminology. *Arch Dermatol.* 2009;145:1137–43.
8. Guitera P, Pellacani G, Crotty KA, Scolyer RA, Li LX, Bassoli S, et al. The impact of in vivo reflectance confocal microscopy on the diagnostic accuracy of lentigo maligna and equivocal pigmented and nonpigmented macules of the face. *J Invest Dermatol.* 2010;130:2080–91.
9. Guitera P, Menzies SW, Longo C, Cesinaro AM, Scolyer RA, Pellacani G. In vivo confocal microscopy for diagnosis of melanoma and basal cell carcinoma using a two-step method: Analysis of 710 consecutive clinically equivocal cases. *J Invest Dermatol.* 2012;132:2386–94.

10. Pellacani G, De Pace B, Reggiani C, Cesinaro AM, Argenziano G, Zalaudek I, et al. Distinct melanoma types based on reflectance confocal microscopy. *Exp Dermatol*. 2014;23:414–8.
11. Alarcon I, Carrera C, Palou J, Alos L, Malveyh J, Puig S. Impact of in vivo reflectance confocal microscopy on the number needed to treat melanoma in doubtful lesions. *Br J Dermatol*. 2014;170:802–8.
12. de Carvalho N, Farnetani F, Ciardo S, Ruini C, Witkowski AM, Longo C, et al. Reflectance confocal microscopy correlates of dermoscopic patterns of facial lesions help to discriminate lentigo maligna from pigmented nonmelanocytic macules. *Br J Dermatol*. 2015;173:128–33.
13. Borsari S, Pampena R, Benati E, Bombonato C, Kyrgidis A, Moscarella E, et al. In vivo dermoscopic and confocal microscopy multistep algorithm to detect in situ melanomas. *Br J Dermatol*. 2018;179:163–72.
14. Charles CA, Marghoob AA, Busam KJ, Clark-Loeser L, Halpern AC. Melanoma or pigmented basal cell carcinoma: A clinical-pathologic correlation with dermoscopy, in vivo confocal scanning laser microscopy, and routine histology. *Skin Res Technol*. 2002;8:282–7.
15. Gonzalez S, Tannous Z. Real-time, in vivo confocal reflectance microscopy of basal cell carcinoma. *J Am Acad Dermatol*. 2002;47:869–74.
16. Nori S, Rius-Díaz F, Cuevas J, Goldgeier M, Jaen P, Torres A, et al. Sensitivity and specificity of reflectance-mode confocal microscopy for in vivo diagnosis of basal cell carcinoma: a multicenter study. *J Am Acad Dermatol*. 2004;51:923–30.
17. Agero AL, Busam KJ, Benvenuto-Andrade C, Scope A, Gill M, Marghoob AA, et al. Reflectance confocal microscopy of pigmented basal cell carcinoma. *J Am Acad Dermatol*. 2006;54:638–43.
18. Ulrich M, Roewert-Huber J, Gonzalez S, Rius-Diaz F, Stockfleth E, Kanitakis J. Peritumoral cleaving in basal cell carcinoma: Correlation of in vivo reflectance confocal microscopy and routine histology. *J Cutan Pathol*. 2011;38:190–5.
19. Peppelman M, Wolberink EA, Blokx WA, van de Kerkhof PC, van Erp PE, Gerritsen MJ. In vivo diagnosis of basal cell carcinoma subtype by reflectance confocal microscopy. *Dermatology*. 2013;227:255–62.
20. Longo C, Lallas A, Kyrgidis A, Rabinovitz H, Moscarella E, Ciardo S, et al. Classifying distinct basal cell carcinoma subtype by means of dermoscopy and reflectance confocal microscopy. *J Am Acad Dermatol*. 2014;71:716–24.e1.
21. Castro RP, Stephens A, Fraga-Braghiroli NA, Oliviero MC, Rezza GG, Rabinovitz H, et al. Accuracy of in vivo confocal microscopy for diagnosis of basal cell carcinoma: a comparative study between handheld and wide-probe confocal imaging. *J Eur Acad Dermatol Venereol*. 2015;29:1164–9.
22. Cinotti E, Jaffelin C, Charriere V, Bajard P, Labeille B, Witkowski A, Cambazard F, et al. Sensitivity of handheld reflectance confocal microscopy for the diagnosis of basal cell carcinoma: A series of 344 histologically proven lesions. *J Am Acad Dermatol*. 2015;73:319–20.
23. Aghassi D, Anderson RR, Gonzalez S. Confocal laser microscopic imaging of actinic keratoses in vivo: A preliminary report. *J Am Acad Dermatol*. 2000;43:42–8.
24. Ulrich M, Maltusch A, Röwert-Huber J, González S, Sterry W, Stockfleth E, et al. Actinic keratoses: non-invasive diagnosis for field cancerisation. *Br J Dermatol*. 2007;156 Suppl3:13–7.
25. Horn M, Gerger A, Ahlgrimm-Siess V, Weger W, Koller S, Kerl H, et al. Discrimination of actinic keratoses from normal skin with reflectance mode confocal microscopy. *Dermatol Surg*. 2008;34:620–5.
26. Rishpon A, Kim N, Scope A, Porges L, Oliviero MC, Braun RP, et al. Reflectance confocal microscopy criteria for squamous cell carcinomas and actinic keratoses. *Arch Dermatol*. 2009;145:766–72.
27. Ulrich M, Kanitakis J, Gonzalez S, Lange-Asschenfeldt S, Stockfleth E, Roewert-Huber J. Evaluation of Bowen disease by in vivo reflectance confocal microscopy. *Br J Dermatol*. 2012;166:451–3.
28. Peppelman M, Nguyen KP, Hoogedoorn L, van Erp PE, Gerritsen MJ. Reflectance confocal microscopy: Non-invasive distinction between actinic keratosis and squamous cell carcinoma. *J Eur Acad Dermatol Venereol*. 2015;29:1302–9.
29. Moscarella E, Rabinovitz H, Zalaudek I, Piana S, Stanganelli I, Oliviero MC, et al. Dermoscopy and reflectance confocal microscopy of pigmented actinic keratoses: a morphological study. *J Eur Acad Dermatol Venereol*. 2015;29:307–14.
30. Manfredini M, Longo C, Ferrari B, Piana S, Benati E, Casari A, et al. Dermoscopic and reflectance confocal microscopy features of cutaneous squamous cell carcinoma. *J Eur Acad Dermatol Venereol*. 2017;31:1828–33.
31. Shahriari N, Grant-Kels JM, Rabinovitz HS, Oliviero M, Scope A. Reflectance confocal microscopy criteria of pigmented squamous cell carcinoma in situ. *Am J Dermatopathol*. 2018;40:173–9.
32. Ahlgrimm-Siess V, Cao T, Oliviero M, Laimer M, Hofmann-Wellenhof R, Rabinovitz HS, et al. Seborrheic keratosis: reflectance confocal microscopy features and correlation with dermoscopy. *J Am Acad Dermatol*. 2013;69:120–6.
33. Pezzini C, Mandel VD, Persechino F, Ciardo S, Kaleci S, Chester J, et al. Seborrheic keratoses mimicking melanoma unveiled by in vivo reflectance confocal microscopy. *Skin Res Technol*. 2018;24:285–93.
34. Bassoli S, Rabinovitz HS, Pellacani G, Porges L, Oliviero MC, Braun RP, et al. Reflectance confocal microscopy criteria of lichen planus-like keratosis. *J Eur Acad Dermatol Venereol*. 2012;26:578–90.
35. Pellacani G, Scope A, Gonzalez S, Guitera P, Farnetani F, Malveyh J, et al. Reflectance confocal microscopy made easy: The 4 must-know key features for the diagnosis of melanoma and nonmelanoma skin cancers. *J Am Acad Dermatol*. 2019;81:520–6.
36. Xiong YD, Ma S, Li X, Zhong X, Duan C, Chen Q. A meta-analysis of reflectance confocal microscopy for the diagnosis of malignant skin tumours. *J Eur Acad Dermatol Venereol*. 2016;30:1295–302.
37. Dinnes J, Deeks JJ, Saleh D, Chuchu N, Bayliss SE, Patel L, et al. Cochrane Skin Cancer Diagnostic Test Accuracy Group. Reflectance confocal microscopy for diagnosing cutaneous melanoma in adults. *Cochrane Database Syst Rev*. 2018;12:CD013190.
38. Dinnes J, Deeks JJ, Chuchu N, Saleh D, Bayliss SE, Takwoingi Y, et al., Cochrane Skin Cancer Diagnostic Test Accuracy Group. Reflectance confocal microscopy for diagnosing keratinocyte skin cancers in adults. *Cochrane Database Syst Rev*. 2018;12:CD013191.
39. Lupu M, Popa IM, Voiculescu VM, Caruntu A, Caruntu C. A systematic review and meta-analysis of the accuracy of in vivo reflectance confocal microscopy for the diagnosis of primary basal cell carcinoma. *J Clin Med*. 2019;8:1462.
40. Pezzini C, Kaleci S, Chester J, Farnetani F, Longo C, Pellacani G. Reflectance confocal microscopy diagnostic accuracy for malignant melanoma in different clinical settings: Systematic review and meta-analysis. *J Eur Acad Dermatol Venereol*. 2020;34:2268–79.
41. Scope A, Benvenuto-Andrade C, Agero AL, Malveyh J, Puig S, Rajadhyaksha M, et al. In vivo reflectance confocal microscopy imaging of melanocytic skin lesions: consensus terminology glossary and illustrative images. *J Am Acad Dermatol*. 2007;57:644–58.
42. Navarrete-Dechent C, Liopyris K, Monnier J, Aleissa S, Boyce LM, Longo C, et al. Reflectance confocal microscopy terminology glossary for melanocytic skin lesions: A systematic review. *J Am Acad Dermatol*. 2021;84:102–19.

43. Navarrete-Dechent C, DeRosa AP, Longo C, Liopyris K, Oliviero M, Rabinovitz H, et al. Reflectance confocal microscopy terminology glossary for nonmelanocytic skin lesions: A systematic review. *J Am Acad Dermatol.* 2019;80:1414–27.e3.
44. Cuenca-Barrales C, Molina-Leyva A, Moreno-Ramírez D, de la Cueva P, Gilaberte Y, Arias-Santiago S. Dermatology care in spanish public hospitals: A mapping study of health care resources and medical and surgical activity in dermatology departments in 2019. *Actas Dermosifiliogr.* 2022;113:467–80.
45. Mazzeo M, Manfreda V, Botti E, Bianchi L. The role of reflectance confocal microscopy on diagnosis of melanoacanthoma. *Actas Dermosifiliogr (Engl Ed).* 2021;112, 763-763.
46. Mazzeo M, Manfreda V, Botti E, Bianchi L. Papel de la microscopia confocal de reflectancia en el diagnóstico del melanoacantoma. *Actas Dermosifiliogr.* 2021;112, 763-763.