



PRACTICAL DERMOSCOPY

[Translated article] Dermoscopic Features of Extrafacial Lentigo Maligna

Claves dermatoscópicas en lentigo maligno extrafacial

Examination of a 77-year-old man in the dermatology clinic revealed a 1.5-cm light brown spot with eccentric pigmentation in the right pectoral region (Fig. 1).

Diagnosis

Dermoscopic examination showed erased areas containing white lines and atypical vascularization in the center and a characteristic fine reticular pattern at the periphery (Fig. 2).

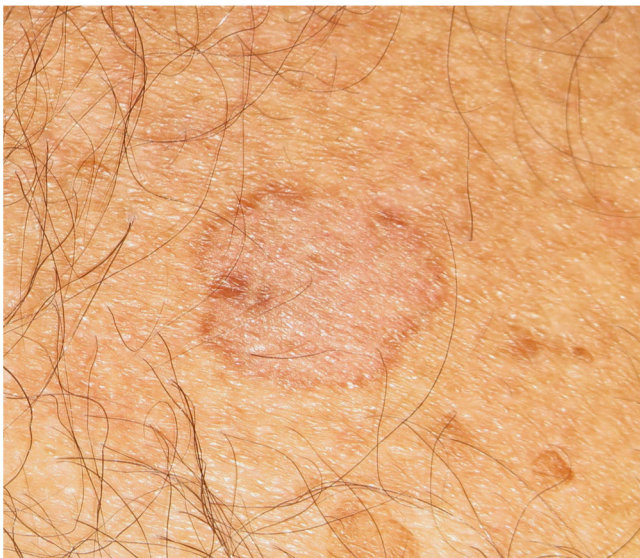


Figure 1 Clinical image. Pale brown 1.5-cm spot with eccentric pigmentation.

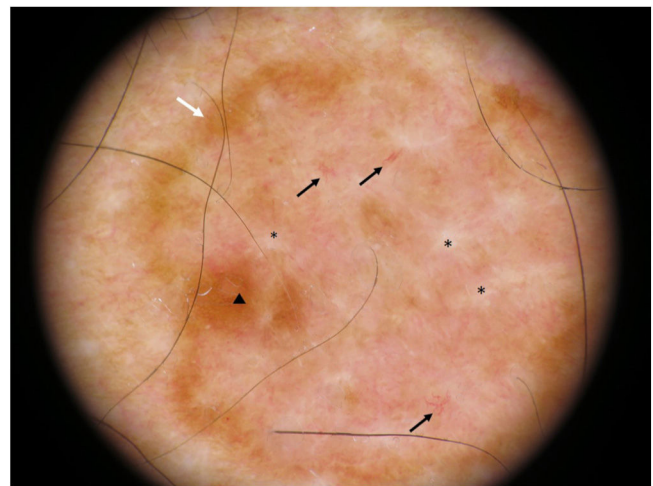


Figure 2 Dermoscopic image. Note the well-defined eccentric pigmentation (triangle), the characteristic reticular pattern at the periphery (white arrow), the structureless center with complete disruption of the reticular structure and white lines (asterisks), and the erythematous background with atypical vascularization (black arrows).

Comment

Examination by confocal microscopy showed an epidermis with abundant dendritic cells and numerous junctional thickenings at the dermoepidermal junction (Fig. 3). The lesion was excised and histologic examination confirmed a diagnosis of extrafacial lentigo maligna (LM).

Extrafacial LM is a lentiginous form of melanoma associated with chronic sun damage.¹ Its incidence is increasing in Spain for a number of reasons, including longer life expectancy and improved clinical identification of these lesions and their dermoscopic features.^{2–4} A clinical progression model with dermoscopic features (Fig. 4) based on confocal microscopy findings has been proposed for extrafacial LA.^{2,5} The first features observed are areas of reticular

DOI of original article:
<https://doi.org/10.1016/j.ad.2022.03.034>

<https://doi.org/10.1016/j.ad.2023.02.008>

0001-7310/© 2023 AEDV. Published by Elsevier España, S.L.U. This is an open access article under the CC BY-NC-ND license (<http://creativecommons.org/licenses/by-nc-nd/4.0/>).

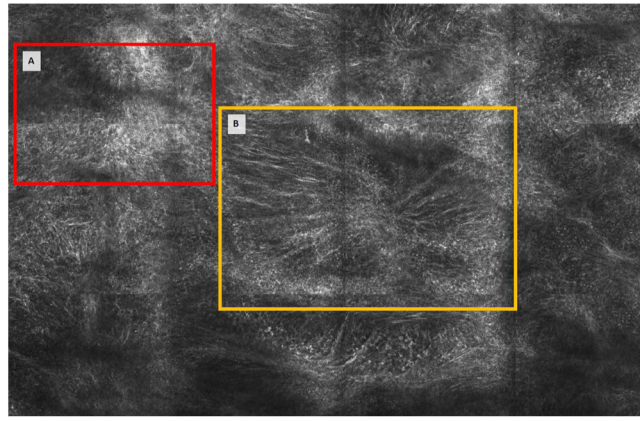


Figure 3 Confocal microscopy. A, Epidermis containing numerous dendritic cells. B, Junctional thickening and dendritic cells at the dermoepidermal junction.

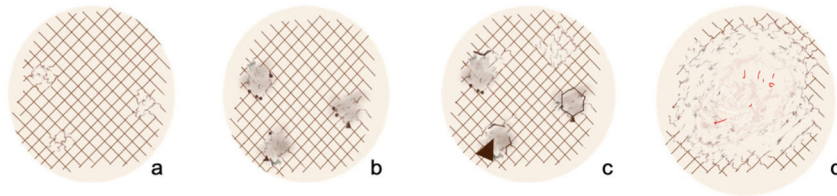


Figure 4 Modified dermoscopic extrafacial lentigo maligna progression model adapted from Gamo-Villegas et al.² A, Reticular disruption. B, Erased area and triangular structures. C, Angulated and zig-zag lines. D, Large areas.

disruption, followed by erased areas surrounded by pigment dots and triangular structures, which progressively evolve to form angulated and zig-zag lines. More advanced lesions show large erased areas with atypical vascularization and typically contain traces of a fine peripheral reticular pattern pointing to the melanocytic nature of the lesion.²

The greatest diagnostic challenges are thus posed by early-stage lesions (when the only finding is reticular disruption) and advanced lesions (when practically all structures have been erased). Identification of advanced lesions is crucial. We recommend paying special attention to atypical vascularization, white lines, and the characteristic traces of the reticular pattern at the periphery.

Funding

None declared.

Conflicts of Interest

The authors declare that they have no conflicts of interest.

References

1. Jaimes N, Marghoob AA, Rabinovitz H, Braun RP, Cameron A, Rosendahl C, et al. Clinical and dermoscopic characteristics of melanomas on nonfacial chronically sun-damaged skin. *J Am Acad Dermatol.* 2015;72:1027–35, <http://dx.doi.org/10.1016/j.jaad.2015.02.1117>.
2. Gamo-Villegas R, Pampín-Franco A, Floristán-Murúzabal U, García-Zamora E, Pinedo-Moraleda F, López-Estebarez JL. Key dermoscopic signs in the diagnosis and progression of extrafacial lentigo maligna: evaluation of a series of 41 cases. *Australas J Dermatol.* 2019;60:288–93, <http://dx.doi.org/10.1111/ajd.13051>.
3. Lau YN, Affleck AG, Fleming CJ. Dermatoscopic features of extrafacial lentigo maligna. *Clin Exp Dermatol.* 2013;38:612–6, <http://dx.doi.org/10.1111/ced.12063>.
4. Keir J. Dermatoscopic features of cutaneous non-facial non-acral lentiginous growth pattern melanomas. *Dermatol Pract Concept.* 2014;4:77–82, <http://dx.doi.org/10.5826/dpc.0401a13>.
5. Guitera P, Pellacani G, Crotty KA, Scolyer RA, Li LX, Bassoli S, et al. The impact of in vivo reflectance confocal microscopy on the diagnostic accuracy of lentigo maligna and equivocal pigmented and nonpigmented macules of the face. *J Invest Dermatol.* 2010;130:2080–91, <http://dx.doi.org/10.1038/jid.2010.84>.

C. Sarró-Fuente*, R. Gamo-Villegas, U. Floristán-Murúzabal

Servicio de Dermatología del Hospital Universitario Fundación Alcorcón, Alcorcón, Madrid, Spain

* Corresponding author.

E-mail address: claudia.sarro@salud.madrid.org (C. Sarró-Fuente).