

## CASE AND RESEARCH LETTERS

### Ulcerative Lupus Erythematosus Profundus in a Patient With Limited Cutaneous Systemic Sclerosis<sup>☆</sup>

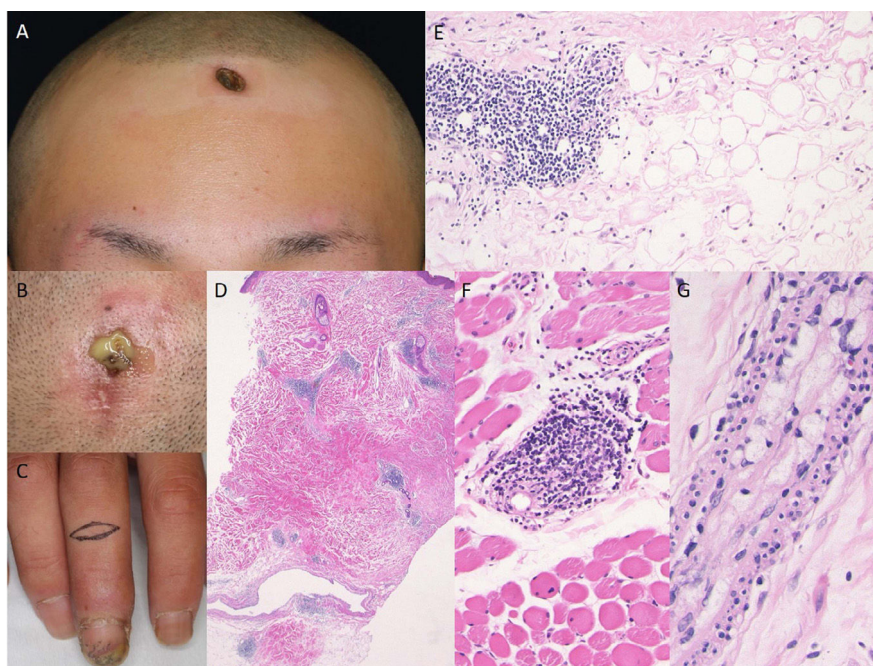


#### Lupus eritematoso profundo ulcerativo en un paciente con esclerosis sistémica cutánea limitada

To the Editor,

A 24-year-old male was referred to our hospital, complaining of recalcitrant ulcers on the forehead and scalp. Physical examination showed well-demarcated ulceration and depressed scars on the forehead, scalp and upper arm (Fig. 1A, B). In addition, he had swollen and cold fingers with

ulceration of the tip of the third finger with nail fold extension (Fig. 1C). He noticed Raynaud's phenomenon and morning stiffness one year previously. Antinuclear antibodies (1:640, nucleolar and homogeneous), and positive anti-Scl-70 antibodies (16 U/mL; normal <10) were detected in the serum, whereas antibodies against centromere, RNA polymerase III, SS-A, SS-B, DNA, ds-DNA, cardiolipin, and Sm were all within normal limits. A biopsy specimen taken from the forehead revealed fibrosis of the lower dermis and subcutaneous tissues, focal infiltration of mononuclear cells in the lower dermis and subcutaneous fat tissues, and hyaline fat degeneration (Fig. 1D). Furthermore, perivascular mononuclear cell infiltration was observed in the muscle tissues (Fig. 1E). Xanthomatous cells were detected in the dermis, which were positive for CD68. Alcian blue stain revealed mucin deposition in the dermis. Of note, foam cells were detected within the blood vessels in the lower dermis (Fig. 1G). Examination by direct immunofluorescence showed linear deposition of IgM in the epidermal basement membrane. A second



**Figure 1** Ulcerative lesions on the forehead (A) and scalp (B), along with swollen fingers and nailfold bleeding (C). Histological features showing focal lymphohistiocytic infiltration and hyaline fat necrosis in the lower dermis to the subcutis (D, E). Lymphocytic infiltration was observed in the muscle layers (F). Foam cells were detected in the vessels (G).

<sup>☆</sup> Please cite this article as: Mori T, Ito T, Kikuchi N, Yamamoto T. Lupus eritematoso profundo ulcerativo en un paciente con esclerosis sistémica cutánea limitada. *Actas Dermosifiliogr.* 2021;112:767–768.

biopsy specimen from the finger showed thickened collagen bundles in the dermis. A third biopsy from the forearm showed edematous dermis with slightly thickened collagen bundles in the lower dermis. Although detailed examination denied pulmonary, renal and esophageal involvement, the symptoms of the patient fulfilled the 2013 classification criteria of systemic sclerosis proposed by American College of Rheumatology/European League against Rheumatism.<sup>1</sup> Oral prednisolone (PSL) (30 mg/day) was started along with intravenous administration of alprostadil. The ulcer was epithelialized six months later. Thereafter, PSL was gradually tapered, and in turn, dapson (50 mg/d) was started. He is well-controlled under 8-10 mg/d oral PSL, without recurrence of ulcers.

Lupus erythematosus profundus (LEP) is a subtype of chronic cutaneous LE with or without systemic lupus erythematosus (SLE). Additionally, LEP is rarely seen in patients with connective tissue diseases other than SLE. Association between LEP and systemic sclerosis (SSc) is extremely rare, and only a few cases have been reported to date.<sup>2</sup> Association with LEP and SSc is extremely rare, and thus the etiology of the present case is unclear. The present case suffered from SSc, and detailed examination denied SLE and mixed connective tissue disease (MCTD). However, it was interesting to observe overlapping conditions of scleroderma and LEP in our case. He developed sclerosis of the upper extremities, but without organ involvement. LEP was developed on the forehead, scalp, and upper extremity. A recent report reviews 20 cases of lupus panniculitis of the scalp, which involved the parietal (70%), frontal (45%), temporal (40%), occipital (30%), and vertex (10%) regions.<sup>3</sup> Ulcer was observed in 10%.

To date, only a few cases of ulcerative LEP have been reported,<sup>4,5</sup> and microangiopathic processes such as segmental fibrinoid vascular necrosis, small vessel thrombosis, and dense angiocentric lymphocyte infiltrates have been suggested. Ishiguro et al. speculated that intractable ulcers occurred as a result of necrobiotic changes in the subcutaneous tissues caused by vascular changes.<sup>5</sup> On the other hand, xanthomatous reaction was detected in the fibrotic tissue of LEP.<sup>6</sup> In the present case, vasculitis was not observed but foam cells were detected in the dermis as well as within the blood vessels. It was speculated that xanthomatous cells were induced by phagocytosis of lipid peroxides caused by macrophage-derived oxygen radicals following destruction of sebaceous glands initiated by immune complex deposition,<sup>7</sup>

which may have induced circulation abnormalities and also tissue damages. Moreover, cellular infiltrates were observed not only in the subcutaneous tissues but also in the muscle layers, and thus those tissue damages may have led to the ulceration of LEP in this case.

## References

1. van den Hoogen F, Khanna D, Fransen J, Johnson SR, Baron M, Tyndall A, et al. 2013 classification criteria for systemic sclerosis: an American College of Rheumatology/European League Against Rheumatism collaborative initiative. *Arthritis Rheum.* 2013;65:2737-47.
2. Oka H, Tanikawa A, Matsuda F, Tanaka M, Nishikawa T. Systemic sclerosis with unusual panniculitis and overlying discoid lupus erythematosus-like lesions. *J Dtsch Dermatol Ges.* 2005;3:627-9.
3. Lueangarun S, Subpayasarn U, Tempark T. Distinctive lupus panniculitis of scalp with linear alopecia along Blaschko's lines: a review of the literature. *Int J Dermatol.* 2019;58:144-50.
4. Martens PB, Moder KG, Ahmed I. Lupus panniculitis: clinical perspectives from a case series. *J Rheumatol.* 1999;26:68-72.
5. Ishiguro N, Iwasaki T, Kawashima M, Kawakami M. Intractable ulceration in a patient with lupus erythematosus profundus successfully treated with cyclosporine. *Int J Dermatol.* 2012;51:1131-3.
6. Ishikawa O, Akimoto S, Sato M, Okugi Y, Takeuchi Y, Miyachi Y. Xanthomatous reaction in lupus panniculitis. *Acta Derm Venereol.* 1996;76:411-2.
7. Arai H, Ito A, Hashimoto A, Eto H, Nishiyama S. Normolipemic xanthoma developed on alopecia lesion on a SLE patient: histological study. *Jpn J Dermatol.* 1991;101:427-37 [in Japanese].

T. Mori,\* T. Ito, N. Kikuchi, T. Yamamoto

*Department of Dermatology, Fukushima Medical University, Fukushima, Japan*

\* Corresponding author.

E-mail address: [mtatsu@fmu.ac.jp](mailto:mtatsu@fmu.ac.jp) (T. Mori).

<https://doi.org/10.1016/j.adengl.2021.05.021>

1578-2190/ © 2021 Published by Elsevier España, S.L.U. on behalf of AEDV. This is an open access article under the CC BY-NC-ND license (<http://creativecommons.org/licenses/by-nc-nd/4.0/>).

## Ciclosporin: An Old Ally in the Treatment of Chronic Spontaneous Urticaria<sup>☆</sup>



### Ciclosporina: una vieja amiga en el tratamiento de la urticaria crónica espontánea

Dear Editor:

Since the introduction of omalizumab for the treatment of chronic spontaneous urticaria (CSU), it has been possi-

ble to control the disease in a high percentage of patients who had been refractory to treatment with high doses of antihistamines<sup>1</sup>. According to the most recent European guidelines<sup>2</sup>, treatment with ciclosporin is indicated in cases where omalizumab has already failed. In this indication, it is prescribed off-label, although it has traditionally been used for treatment of CSU<sup>3</sup>. Published data are scarce, and only 2 randomized clinical trials involving no more than 16 weeks<sup>4</sup> and 8 weeks<sup>5</sup> of treatment have been performed. Nevertheless, there are cohorts and case series of patients treated with this drug at low doses for longer periods (i.e., up to 10 years)<sup>6</sup>. We performed the present study to improve our knowledge of ciclosporin for treatment of CSU in patients whose therapy with omalizumab had already failed.

We designed an observational, longitudinal, prospective study of patients diagnosed with CSU and treated with ciclosporin at our center. Previous treatment with omalizumab had failed. We recorded epidemiological and clinical data and assessed the severity of urticaria using the 7-day

<sup>☆</sup> Please cite this article as: Pinilla Martín B, Tous Romero F, Ortiz de Frutos FJ. Ciclosporina: una vieja amiga en el tratamiento de la urticaria crónica espontánea. *Actas Dermosifiligr.* 2021;112:768-769.